

EXISTING LANDSCAPING

ROAD	BRADFORD PEAR	CEDAR TREE	CREPE MYRTLE
CARGILL AVE.	-	8	8
RALSTON ST.	6	8	-
TOTAL:	6	16	8

NOTES:
 1. EX. TREES ARE APPROXIMATELY 10 FT. TALL AND IN GOOD CONDITION.
 2. EX. CREPE MYRTLES ARE APPROXIMATELY 5 FT. TALL AND IN GOOD CONDITION.

SURVEY NOTES:

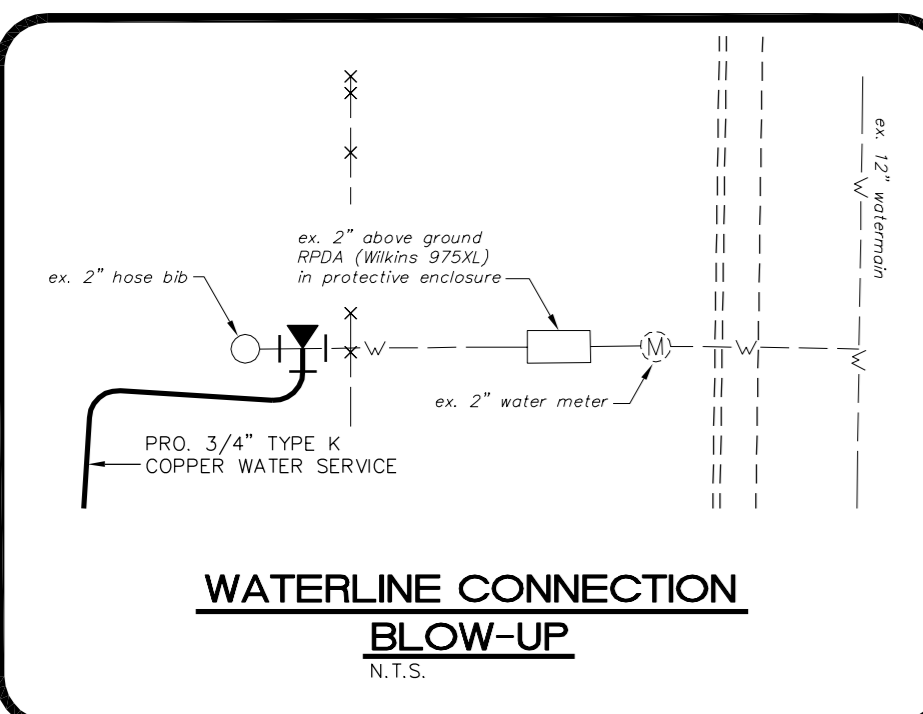
1. NAD 83 STATE PLANE COORDINATES AS PER WILSON COUNTY GIS (NOT SURVEYED).
 NORTH CORNER = N 713,779.189 , E 2,321,917.900
 EAST CORNER = N 713,548.658 , E 2,324,096.606
 SOUTH CORNER = N 713,330.190 , E 2,323,784.764
 WEST CORNER = N 713,585.740 , E 2,323,534.234
 COORDINATES REQUESTED BY CITY OF WILSON ENGINEERING
 2. NO GRID MONUMENT WITHIN 2,000'

NOTE:

Symbol shown for handicap parking space clarification on plans only. Do **NOT** place ground painted symbols on pavement.

1999 North Carolina Accessibility Code 4.1.2 - sign mounting heights at accessible spaces (part 3 states:

1. Regardless of age, all accessible spaces shall be identified by above-ground signs only. (See N.C.G.S.)
 2. New spaces shall not use ground painted symbols.



WATERLINE CONNECTION BLOW-UP
N.T.S.

Certificate of Approval under Neuse River Basin Stormwater Protection Program for Nitrogen Removal Regulations.

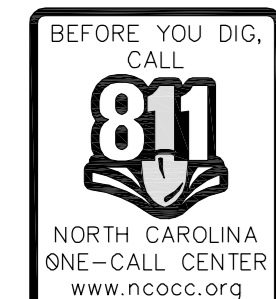
I certify that the (plot/development plan) shown hereon is exempt from the Neuse River regulations due to disturbing less than 1/2 acre.

Public Services / Stormwater Date

Certificate of Approval under Neuse River Basin Stormwater Protection Program for Nitrogen Removal Regulations.

I certify that the (plot/development plan) shown hereon is exempt from the peak flow requirements since the increase in peak flow between pre- and post-developments is less than 10%.

Public Services / Stormwater Date



These plans are for bidding purposes only and are not to be used as Construction drawings unless initialed and dated as approved for Construction below by the Engineer.

Approved for Construction: _____ Date: _____

BOUNDARY DESCRIPTION SHOWN IS NOT FOR RECORDATION.

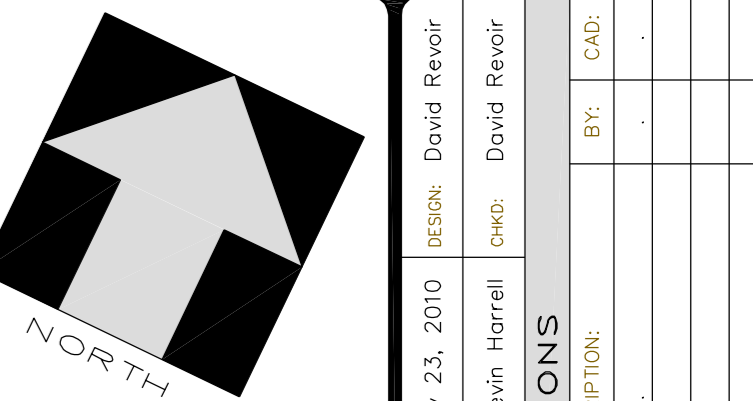
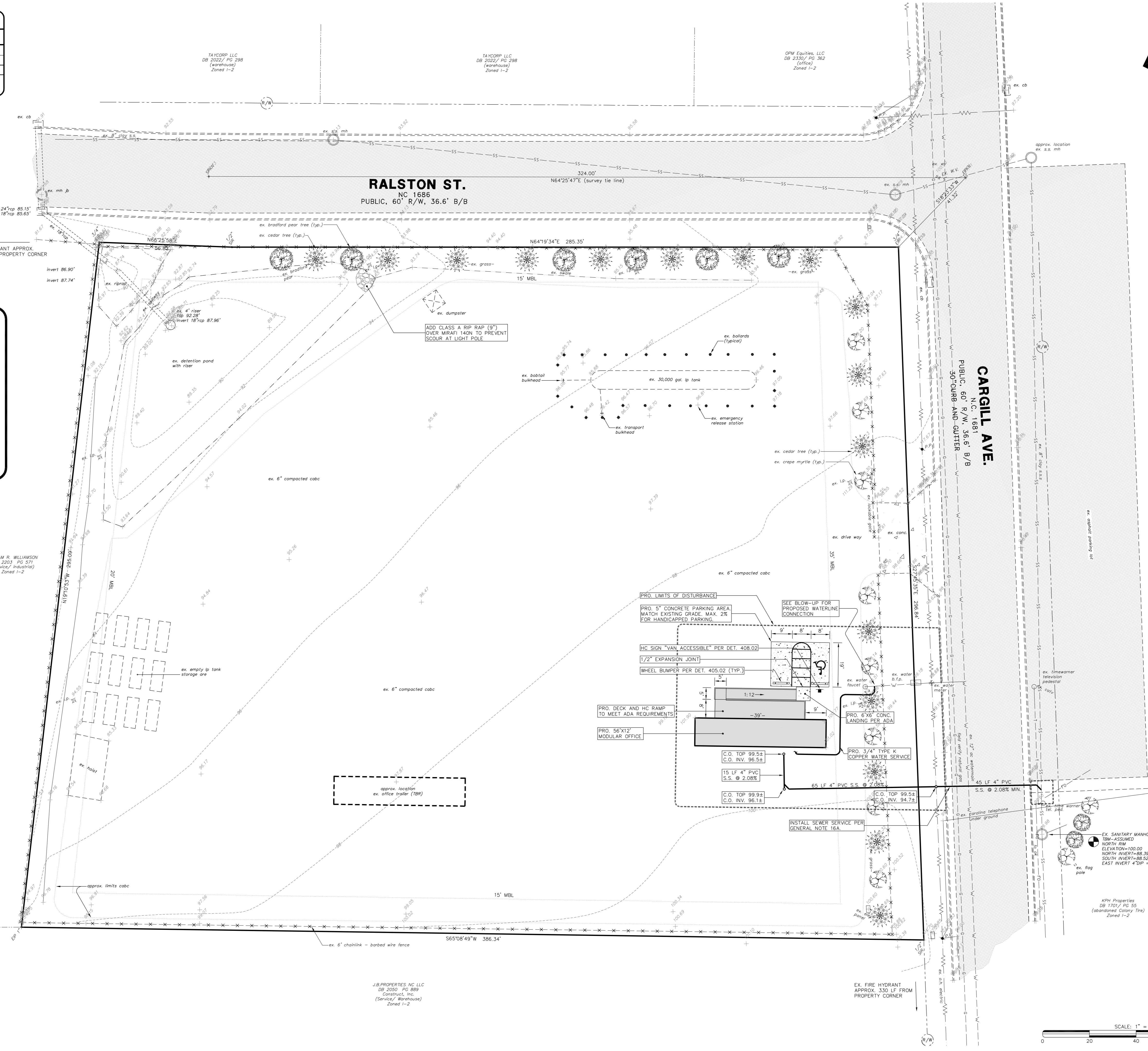
RECORD DRAWINGS:
 These drawings are believed to be a correct representation of actual field conditions but are not warranted as such.

By: _____ Date: _____

CONSTRUCTION SAFETY
 These drawings do not contain the requirements for job safety. All provisions for safety shall be the sole responsibility of the contractor.

EXISTING CONDITIONS:
 The contractor shall be responsible for reviewing all existing job conditions. Any adverse existing conditions affecting work shown on these drawings shall be brought to the attention of the engineer for possible clarification or reconciliation.

ADA AND LEGAL DISCLAIMER
 This document is not represented to comply with all requirements contained in the ADA or other laws. Engineers are not licensed to interpret laws or give advice concerning laws; the owner should have this document reviewed by his attorney to determine legal compliance.



NO.	DATE	DESCRIPTION
1	February 23, 2010	REVISIONS
2	AS NOTED	AS NOTED



CONSULTING ENGINEERS, P.A.
 CIVIL, MUNICIPAL &
 STRUCTURAL ENGINEERS
 COMPREHENSIVE
 ENVIRONMENTAL SERVICES
 BLN: C-0562

154 Roundabout Ct.
 Rocky Mount, N.C. 27804
 Phone: (252) 972-7703
 Fax: (252) 972-7638

www.applanengineers.com
 admin@applanengineers.com



U P I P A

SITE PLAN for United Propane Gas Wilson, North Carolina

10-009
 D-0000
CE-1

